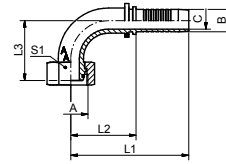


DKOS 90°

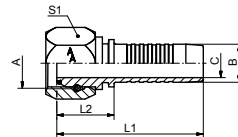


Pressnippel DKOS 90°, Dichtkegel mit 24° Konus und O-Ring, schwere Reihe, Dichtkopf metrisch

Pressnipple DKOS 90°, sealing cone 24° with o-ring, sealing head thread metric, heavy duty series

DN	Rohr	A	B / mm	C / mm	L1 / mm	L2 / mm	L3 / mm	S1	Art.Nr.
6	6	M14x1,5	6.7	3.9	56.0	26.0	29.6	17	4202DN06M14
6	8	M16x1,5	6.7	3.9	57.0	27.0	31.0	19	4202DN06M16
6	10	M18x1,5	6.7	3.9	61.5	31.5	34.0	22	4202DN06
8	12	M20x1,5	8.0	5.4	58.0	28.0	34.5	24	4202DN08
10	12	M20x1,5	9.6	6.5	71.5	38.2	37.5	24	4202DN10M20
10	14	M22x1,5	9.6	6.5	68.5	35.2	40.4	27	4202DN10
12	16	M24x1,5	12.8	9.5	76.0	40.7	47.0	30	4202DN12
12	20	M30x2	12.8	9.5	75.0	39.7	47.0	36	4202DN12M30
16	20	M30x2	16.0	12.6	86.0	47.7	53.6	36	4202DN16
20	20	M30x2	19.1	14.8	100.0	54.2	61.0	36	4202DN20M30
20	25	M36x2	19.1	14.8	100.0	54.2	61.0	46	4202DN20
25	30	M42x2	25.9	20.0	124.5	69.5	75.0	50	4202DN25
32	38	M52x2	32.5	26.0	150.0	90.2	86.0	60	4202DN32

DKOR



Pressnippel DKOR, Dichtkegel mit 60° Konus und O-Ring, Dichtkopf BSPP Gewinde

Pressnipple DKOR, sealing cone 60° with o-ring, sealing head thread BSPP

DN	A	B / mm	C / mm	L1 / mm	L2 / mm	S1	Art.Nr.
6	G1/4	6.7	3.9	52.7	22.7	19	4260DN06
8	G3/8	8.0	5.4	58.8	26.8	19	4260DN08
10	G3/8	9.6	6.5	57.1	23.8	19	4260DN10
12	G1/2	12.8	9.5	62.6	27.3	27	4260DN12
16	G3/4	16.0	12.6	62.4	24.1	32	4260DN16
20	G3/4	19.1	14.8	73.8	28.0	36	4260DN20
25	G1	25.9	20.0	86.5	31.5	41	4260DN25
32	G1 1/4	32.5	26.0	94.7	34.9	50	4260DN32
40	G1 1/2	38.9	31.0	103.0	35.5	55	4260DN40
50	G2	51.6	40.0	112.5	37.5	70	4260DN50