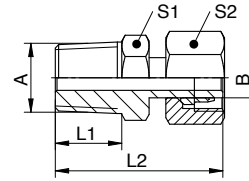


EVGE-LR/SR-NPT



Einstellbare gerade Verschraubung mit Schaft, Einschraubgewinde NPT, leichte + schwere Reihe

Straight male stud coupling, union nut adjustable, male thread NPT, light and heavy duty series

| Reihe | A | B | PN / bar | L1 / mm | L2 / mm | S1 | S2 | Art.Nr. |
|-------|----------|----|----------|---------|---------|----|----|------------|
| L | 1/8NPT | 06 | 315 | 10.0 | 39.0 | 14 | 14 | EVGE06LN01 |
| L | 1/4NPT | 08 | 315 | 15.0 | 40.0 | 14 | 17 | EVGE08LN02 |
| L | 1/4NPT | 10 | 315 | 15.0 | 42.0 | 17 | 19 | EVGE10LN02 |
| L | 3/8NPT | 12 | 315 | 15.0 | 47.0 | 19 | 22 | EVGE12LN03 |
| L | 1/2NPT | 15 | 315 | 20.0 | 50.0 | 22 | 27 | EVGE15LN04 |
| L | 1/2NPT | 18 | 315 | 20.0 | 50.0 | 22 | 32 | EVGE18LN04 |
| L | 3/4NPT | 22 | 160 | 20.0 | 52.0 | 30 | 36 | EVGE22LN06 |
| L | 1NPT | 28 | 160 | 25.0 | 60.0 | 36 | 41 | EVGE28LN08 |
| L | 1 1/4NPT | 35 | 160 | 26.0 | 62.0 | 46 | 50 | EVGE35LN10 |
| L | 1 1/2NPT | 42 | 160 | 26.0 | 66.0 | 50 | 60 | EVGE42LN12 |
| S | 1/4NPT | 06 | 630 | 15.0 | 41.0 | 17 | 17 | EVGE06SN02 |
| S | 1/4NPT | 08 | 630 | 15.0 | 42.0 | 19 | 19 | EVGE08SN02 |
| S | 3/8NPT | 10 | 630 | 15.0 | 45.0 | 19 | 22 | EVGE10SN03 |
| S | 3/8NPT | 12 | 630 | 15.0 | 45.0 | 19 | 24 | EVGE12SN03 |
| S | 1/2NPT | 14 | 630 | 20.0 | 52.0 | 22 | 27 | EVGE14SN04 |
| S | 1/2NPT | 16 | 400 | 20.0 | 52.0 | 22 | 30 | EVGE16SN04 |
| S | 3/4NPT | 20 | 400 | 20.0 | 61.0 | 30 | 36 | EVGE20SN06 |
| S | 1NPT | 25 | 400 | 25.0 | 70.0 | 36 | 46 | EVGE25SN08 |
| S | 1 1/4NPT | 30 | 400 | 26.0 | 71.0 | 46 | 50 | EVGE30SN10 |
| S | 1 1/2NPT | 38 | 250 | 26.0 | 78.0 | 50 | 60 | EVGE38SN12 |