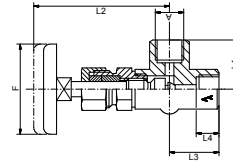
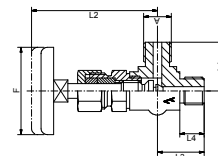


Fig. 109/M


Hochdruck-Absperr-Eckventil, beiderseits BSPP Innengewinde, Material: 1.0460, 1.4571, 1.4104

High-pressure angle valve, both sides female thread BSPP, material: 1.0460, 1.4571, 1.4104

Figur	A	DN	PN / bar	L1 / mm	L2 / mm	L3 / mm	L4 / mm	F / mm	Material	Art.Nr.
Fig. 109/M	G1/4	5	400	37	113	40	15	70	1.0460	10109M025
Fig. 109/M	G3/8	6	400	37	113	40	15	70	1.0460	10109M035
Fig. 109/M	G1/2	8	400	37	115	40	17	70	1.0460	10109M045
Fig. 109/M	G3/4	10	400	39	125	50	19	90	1.0460	10109M065
Fig. 109/M	G1	15	250	55	157	65	21	100	1.0460	10109M085
Fig. 109/M	G1 1/4	18	160	55	157	65	22	100	1.0460	10109M105
Fig. 109/M	G1 1/2	24	160	70	200	80	24	150	1.0460	10109M125
Fig. 109/M	G1/4	5	400	37	113	40	15	70	1.4571	10109M023
Fig. 109/M	G3/8	6	400	37	113	40	15	70	1.4571	10109M033
Fig. 109/M	G1/2	8	400	37	115	40	17	70	1.4571	10109M043
Fig. 109/M	G3/4	10	400	39	125	50	19	90	1.4571	10109M063
Fig. 109/M	G1	15	250	55	157	65	21	100	1.4571	10109M083
Fig. 109/M	G1 1/4	18	160	55	157	65	22	100	1.4571	10109M103
Fig. 109/M	G1 1/2	24	160	70	200	80	24	150	1.4571	10109M123
Fig. 109/M	G1/4	5	400	37	113	40	15	70	1.4104	10109M024
Fig. 109/M	G3/8	6	400	37	113	40	15	70	1.4104	10109M034
Fig. 109/M	G1/2	8	400	37	115	40	17	70	1.4104	10109M044
Fig. 109/M	G3/4	10	400	39	125	50	19	90	1.4104	10109M064
Fig. 109/M	G1	15	250	55	157	65	21	100	1.4104	10109M084
Fig. 109/M	G1 1/4	18	160	55	157	65	22	100	1.4104	10109M104

Fig. 109/Z


Hochdruck-Absperr-Eckventil, beiderseits BSPP Außengewinde, Material: 1.0460, 1.4571, 1.4104

High-pressure angle valve, both sides male thread BSPP, material: 1.0460, 1.4571, 1.4104

Figur	A	DN	PN / bar	L1 / mm	L2 / mm	L3 / mm	L4 / mm	F / mm	Material	Art.Nr.
Fig. 109/Z	G1/4	5	400	37	113	40	15	70	1.0460	10109Z025
Fig. 109/Z	G3/8	6	400	37	113	40	15	70	1.0460	10109Z035
Fig. 109/Z	G1/2	8	400	37	113	40	17	70	1.0460	10109Z045
Fig. 109/Z	G3/4	10	400	39	125	50	19	90	1.0460	10109Z065
Fig. 109/Z	G1	10	250	39	125	50	19	90	1.0460	10109Z085
Fig. 109/Z	G1/4	5	400	37	113	40	15	70	1.4571	10109Z023
Fig. 109/Z	G3/8	6	400	37	113	40	15	70	1.4571	10109Z033
Fig. 109/Z	G1/2	8	400	37	113	40	17	70	1.4571	10109Z043
Fig. 109/Z	G3/4	10	400	39	125	50	19	90	1.4571	10109Z063
Fig. 109/Z	G1	15	250	55	157	65	21	100	1.4571	10109Z083
Fig. 109/Z	G1 1/4	18	160	55	157	65	22	100	1.4571	10109Z103
Fig. 109/Z	G1 1/2	24	160	55	157	65	24	100	1.4571	10109Z123
Fig. 109/Z	G1/2	8	400	37	113	40	17	70	1.4104	10109Z044
Fig. 109/Z	G3/4	10	400	39	125	50	19	90	1.4104	10109Z064
Fig. 109/Z	G1	15	250	55	157	65	21	100	1.4104	10109Z084