



## Nadelventile

### Needle valves

Werkstoff: Messing, Stahl, Edelstahl 1.4571

Handrad: G1/8" - G3/4" Bakelit, G1" - G2" Stahlblech

Temperatur: Messing max. 100° C  
 Stahl max. 350° C  
 Edelstahl 1.4571 max. 250° C  
 Mit Sonderpackung/-fett max. 550° C

Messing mit einteiliger Spindel, Stahl und Edelstahl bis G1/2 und NPT1/2 einteilige und ab G3/4 und NPT3/4 zweiteilige Spindel

Druckbereich: 100 - 400 bar je nach Ausführung

Bei Temperaturen ab 50° C Druckabschläge beachten.

Material: Brass, steel, stainless steel 1.4571

Hand wheel: G1/8" - G3/4" bakelite, G1" - G2" sheet steel

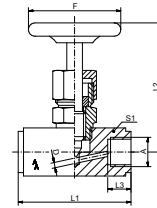
Temperature: Brass max. 100° C  
 Steel max. 350° C  
 Stainless Steel 1.4571 max. 250° C  
 With special gasket/grease max. 550° C

Brass with one-piece spindle, steel and stainless steel until G1/2 and NPT1/2 one-piece and from G3/4 and NPT3/4 two-piece spindle

Pressure range: 100 - 400 bar according to design

Pressure drop to be considered for more than 50° C.

**Fig. 110**

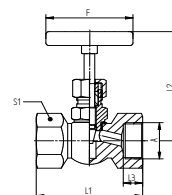


Nadelventil, beiderseits Innengewinde, Material: Stahl, 1.4571

Needle valve, both sides female thread, material: steel, 1.4571

Figur	A	DN	PN / bar	L1 / mm	L2 / mm	L3 / mm	S1	F / mm	Material	Art.Nr.
Fig. 110	G1/8	4	400	50	72	11	25	50	Stahl	10110012
Fig. 110	G1/4	5	400	55	85	15	25	50	Stahl	10110022
Fig. 110	G3/8	6	400	55	85	15	25	50	Stahl	10110032
Fig. 110	G1/2	7	400	60	85	17	30	63	Stahl	10110042
Fig. 110	G3/4	9	200	75	105	19	35	63	Stahl	10110062
Fig. 110	G1	12	200	100	120	21	45	90	Stahl	10110082
Fig. 110	G1 1/4	15	160	110	155	22	60	100	Stahl	10110102
Fig. 110	G1 1/2	22	120	130	160	24	70	100	Stahl	10110122
Fig. 110	G2	22	120	130	160	28	70	100	Stahl	10110162
Fig. 110	G1/8	4	400	45	85	11	25	50	1.4571	10110013
Fig. 110	G1/4	5	400	55	85	15	25	50	1.4571	10110023
Fig. 110	G3/8	6	400	55	85	15	25	50	1.4571	10110033
Fig. 110	G1/2	7	400	60	85	17	30	63	1.4571	10110043
Fig. 110	G3/4	9	200	75	105	19	35	63	1.4571	10110063
Fig. 110	G1	12	200	100	120	21	45	90	1.4571	10110083
Fig. 110	G1 1/4	15	160	110	155	22	60	100	1.4571	10110103
Fig. 110	G1 1/2	22	120	130	160	24	70	100	1.4571	10110123
Fig. 110	G2	22	120	130	160	28	70	100	1.4571	10110163

**Fig. 110/MS**



Nadelventil, beiderseits Innengewinde, Material: Messing

Needle valve, both sides female thread, material: brass

Figur	A	DN	PN / bar	L1 / mm	L2 / mm	L3 / mm	S1	F / mm	Art.Nr.
Fig. 110/MS	G1/8	4	100	50	85	10	22	50	10110011
Fig. 110/MS	G1/4	5	100	50	85	10	22	50	10110021
Fig. 110/MS	G3/8	6	100	50	85	10	22	50	10110031
Fig. 110/MS	G1/2	6.5	100	55	90	12	25	63	10110041
Fig. 110/MS	G3/4	8.5	100	67	110	14	32	63	10110061
Fig. 110/MS	G1	10	100	75	110	17	41	63	10110081
Fig. 110/MS	G1 1/4	13	100	110	130	20	55	90	10110101
Fig. 110/MS	G1 1/2	15	100	110	130	20	60	90	10110121
Fig. 110/MS	G2	15	100	112	140	21	70	90	10110161