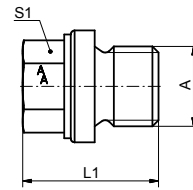




Fig. 5833

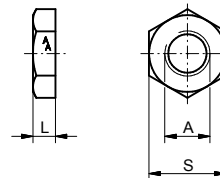


Verschlussstopfen DIN 910, BSPP Gewinde

Plug, DIN 910, thread BSPP

A	L1 / mm	S1	Art.Nr.
G1/8	17	10	583301
G1/4	21	13	583302
G3/8	21	17	583303
G1/2	26	19	583304
G3/4	30	24	583306
G1	32	27	583308
G1 1/4	33	30	583310
G1 1/2	33	30	583312
G2	40	36	583316

Fig. 5834

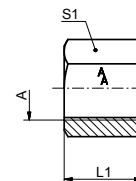


Flache Rohrmutter DIN 431, BSPP Gewinde

Nut DIN 431, thread BSPP

A	L1 / mm	S1	Art.Nr.
G1/8	6	19	583401
G1/4	6	22	583402
G3/8	7	27	583403
G1/2	8	32	583404
G3/4	9	36	583406
G1	10	46	583408

Fig. 5835



Sechskant Durchgangsmuffe, BSPP Gewinde

Hexagon socket, thread BSPP

A	L1 / mm	S1	Material	Art.Nr.
G1/8	17	14	1.4571	5835013
G1/4	25	19	1.4571	5835023
G3/8	26	22	1.4571	5835033
G1/2	36	27	1.4571	5835043
G3/4	36	32	1.4571	5835063
G1	43	41	1.4571	5835083