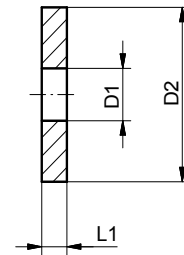


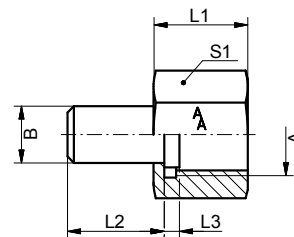
Fig. 84



Dichtscheibe DIN 16258, Material: Stahl, 1.4571, Kupfer, Graphit, Teflon, Centellen
 Sealing disc, DIN 16258, material: steel, 1.4571, copper, graphit, teflon, centellen

Figur	Anschluß	DIN	D1	D2	L1 / mm	Material	Art.Nr.
Fig. 84	G1/4	DIN 16258	5.2	9.5	1.5	Kupfer	1008402CU
Fig. 84	G1/2	DIN 16258	6.2	17.5	2	Kupfer	1008404CU
Fig. 84	G1/4	DIN 16258	5.2	9.5	1.5	Centellen	1008402IT
Fig. 84	G1/2	DIN 16258	6.2	17.5	2	Centellen	1008404IT
Fig. 84	G1/4	DIN 16258	5.2	9.5	1.5	Stahl	10084022
Fig. 84	G1/2	DIN 16258	6.2	17.5	2	Stahl	10084042
Fig. 84	G1/4	DIN 16258	5.2	8	1	Teflon	1008402T
Fig. 84	G1/2	DIN 16258	6.2	17.5	1.5	Teflon	1008404T
Fig. 84	G1/4	DIN 16258	5.2	9	1.5	1.4571	10084023
Fig. 84	G1/2	DIN 16258	6.5	17	2	1.4571	10084043
Fig. 84	G1/2	DIN 16258	6.2	17.5	2	Graphit	1008404G

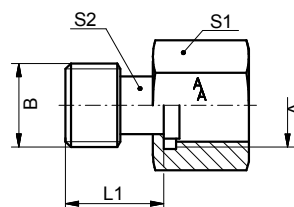
Fig. 85



Überwurfmutter und Schweißnippel, DIN 16284, Material: Messing, Stahl, 1.4571
 Union nut and welding nipple, DIN 16284, material: brass, steel, 1.4571

Figur	A	DIN	PN / bar	B / mm	L1 / mm	L2 / mm	L3 / mm	S1	Material	Art.Nr.
Fig. 85	G1/2	DIN 16284	250	12	30	24	6	27	Messing	10085041
Fig. 85	G1/2	DIN 16284	400	12	30	24	6	27	Stahl	10085042
Fig. 85	G1/2	DIN 16284	400	12	30	24	6	27	1.4571	10085043

Fig. 1



Lose Verschraubung für Manometer, Material: Messing
 Manometer adapter adjustable, material: brass

Figur	A	B	L1 / mm	S1	S2	Art.Nr.
Fig. 1	G1/2	G1/2	30	27	13	10001041