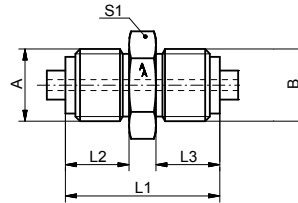


**Fig. 86/DoNi**

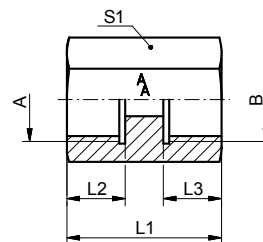


Manometer Doppelnippel, rechts x rechts, Material: Messing, Stahl, 1.4571

Manometer double nipple, right x right, material: brass, steel, 1.4571

Figur	A	B	L1 / mm	L2 / mm	L3 / mm	S1	Material	Art.Nr.
Fig. 86/DoNi	G1/4	G1/4	34	13	13	14	Messing	10086101
Fig. 86/DoNi	G1/4	G1/2	43	13	20	27	Messing	10086121
Fig. 86/DoNi	G1/2	G1/2	50	20	20	27	Messing	10086131
Fig. 86/DoNi	G1/4	G1/4	34	13	13	14	Stahl	10086102
Fig. 86/DoNi	G1/2	G1/2	50	20	20	27	Stahl	10086132
Fig. 86/DoNi	G1/4	G1/4	34	13	13	14	1.4571	10086103
Fig. 86/DoNi	G1/4	G1/2	43	13	20	27	1.4571	10086123
Fig. 86/DoNi	G1/2	G1/2	50	20	20	27	1.4571	10086133

**Fig. 86/Muffe**



Manometeranschlußmuffe mit Steg, Material: Messing, Stahl, 1.4571

Manometer connection, socket with separation, material: brass, steel, 1.4571

Figur	A	B	L1 / mm	L2 / mm	L3 / mm	S1	Material	Art.Nr.
Fig. 86/Muffe	G1/4	G1/4	30	13	13	19	Messing	10086011
Fig. 86/Muffe	G1/2	G1/2	40	16	16	27	Messing	10086021
Fig. 86/Muffe	G1/2	G1/2	40	16	16	27	Stahl	10086022
Fig. 86/Muffe	G1/4	G1/4	30	13	13	19	1.4571	10086013
Fig. 86/Muffe	G1/2	G1/2	40	16	16	27	1.4571	10086023