

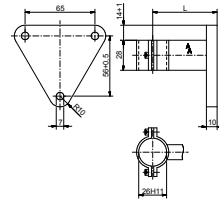
Messgerätehalter DIN 16281, Form H

Instrument holders DIN 16281, form H

Zur direkten Wandbefestigung des Absperrventils mit Druckmessgerät.

Wall fastening for shut-off valves and measuring instruments.

Fig. 89/04



Messgerätehalter, DIN 16281, Material: Aluminium, 1.4571

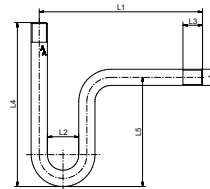
Instrument holder, DIN 16281, material: aluminium, 1.4571

Figur	DIN	L1 / mm	Material	Art.Nr.
Fig. 89/04	DIN 16281, Form H	60	Aluminium, lackiert	100894060
Fig. 89/04	DIN 16281, Form H	100	Aluminium, lackiert	100894100
Fig. 89/04	DIN 16281, Form H	160	Aluminium, lackiert	100894160
Fig. 89/04	DIN 16281, Form H	60	1.4571	1008940603
Fig. 89/04	DIN 16281, Form H	100	1.4571	1008941003
Fig. 89/04	DIN 16281, Form H	160	1.4571	1008941603

Wassersackrohre PN 25

Siphons PN 25

Fig. 90

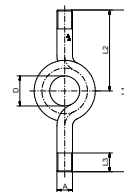


Wassersackrohr, PN 25, beiderseits Außengewinde, U-Form, Material: Stahl, 1.4571

Siphon, PN 25, both sides male thread, U-shape, material: steel, 1.4571

Figur	A	Form	L1 / mm	L2 / mm	L3 / mm	L4 / mm	L5 / mm	Material	Art.Nr.
Fig. 90	R1/4	U-Form flach	230	56	14	170	135	Stahl	10090022
Fig. 90	R1/2	U-Form flach	230	56	16	170	135	Stahl	10090042
Fig. 90	R1/4	U-Form flach	230	56	14	170	135	1.4571	10090023
Fig. 90	R1/2	U-Form flach	230	56	18	165	135	1.4571	10090043

Fig. 95



Wassersackrohr, PN 25, Zapfen x Zapfen, Kreisform, Material: Stahl, 1.4571

Siphon, PN 25, male thread x male thread, circular, material: steel, 1.4571

Figur	A	Form	D	L1 / mm	L2 / mm	L3 / mm	Material	Art.Nr.
Fig. 95	R1/4	Kreisform	68	240	120	14	Stahl	10095022
Fig. 95	R1/2	Kreisform	56	240	120	20	Stahl	10095042
Fig. 95	R1/4	Kreisform	68	240	120	14	1.4571	10095023
Fig. 95	R1/2	Kreisform	56	260	120	20	1.4571	10095043