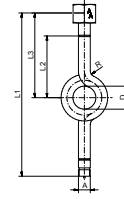




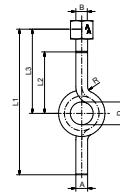
Fig. 96



Wassersackrohr, DIN 16282, Form C, Zapfen x Spannmuffe, Kreisform, Material: Stahl, 1.4571 für vertikale Druckentnahme
Siphon, DIN 16282-C, male thread x sleeve, circular, material: steel, 1.4571

Figur	A	Form	DIN	D	L1 / mm	L2 / mm	L3 / mm	Material	Art.Nr.
Fig. 96	G1/2	Kreisform	DIN 16282 - Form C	56	275	95	130	Stahl	10096042
Fig. 96	G1/2	Kreisform	DIN 16282 - Form C	56	275	95	130	1.4571	10096043

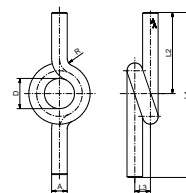
Fig. 97



Wassersackrohr, DIN 16282, Form D, Anschweißende x Spannmuffe, Kreisform, Material: Stahl, 1.4571 für vertikale Druckentnahme
Siphon, DIN 16282-D, welding end x sleeve, circular, material: steel, 1.4571

Figur	A	Form	DIN	D	L1 / mm	L2 / mm	L3 / mm	Material	Art.Nr.
Fig. 97	G1/2	Kreisform	DIN 16282 - Form D	56	240	95	130	Stahl	10097042
Fig. 97	G1/2	Kreisform	DIN 16282 - Form D	56	240	95	130	1.4571	10097043

Fig. 98



Wassersackrohr, DIN 16282, Form G, Anschweißende x Anschweißende, Kreisform, Material: Stahl, 1.4571 für vertikale Druckentnahme
Siphon, DIN 16282-G, welding end x welding end, circular, material: steel, 1.4571

Figur	A	Form	DIN	D	L1 / mm	L2 / mm	L3 / mm	Material	Art.Nr.
Fig. 98	G1/2	Kreisform	DIN 16282 - Form G	56	205	95	25	Stahl	10098042
Fig. 98	G1/2	Kreisform	DIN 16282 - Form G	56	205	95	25	1.4571	10098043