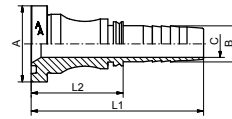




**SFS**

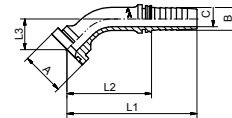


Pressnippel SFS, mit Flansch 6000 PSI, schwere Reihe

Pressnipple SFS, flange connection 6000 PSI, heavy duty series

DN	A	B / mm	C / mm	L1 / mm	L2 / mm	Art.Nr.
20	3/4-41,3	19.6	14.8	109.0	62.0	8760DN20
25	1-47,6	26.0	18.0	121.0	65.0	8760DN25
25	1 1/4-54,0	26.0	18.0	123.0	67.5	8760DN25G10
32	1 1/4-54,0	32.2	24.0	154.0	87.0	8760DN32
32	1 1/2-63,5	32.2	24.0	160.0	93.0	8760DN32G12
40	1 1/2-63,5	38.7	28.0	166.0	94.0	8760DN40G12
40	2-79,4	38.7	28.0	176.0	104.0	8760DN40G16
50	2-79,4	51.6	40.0	181.0	111.0	8760DN50

**SFS 45°**

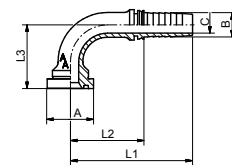


Pressnippel SFS 45°, mit Flansch 6000 PSI, schwere Reihe

Pressnipple SFS 45°, flange connection 6000 PSI, heavy duty series

DN	A	B / mm	C / mm	L1 / mm	L2 / mm	L3 / mm	Art.Nr.
32	1 1/4-54,0	32.2	24.0	240.5	192.5	48,0	8761DN32
40	1 1/2-63,5	38.7	30.0	275.0	203.0	50,0	8761DN40

**SFS 90°**



Pressnippel SFS 90°, mit Flansch 6000 PSI, schwere Reihe

Pressnipple SFS 90°, flange connection 6000 PSI, heavy duty series

DN	A	B / mm	C / mm	L1 / mm	L2 / mm	L3 / mm	Art.Nr.
20	3/4-41,3	19.7	14.0	133.0	86.0	69,0	8762DN20
25	1-47,6	26.0	20.0	158.0	102.0	80,0	8762DN25
32	1 1/4-54,0	32.2	24.0	179.0	112.0	104,5	8762DN32
40	1 1/2-63,5	38.7	30.0	199.5	127.5	120,0	8762DN40