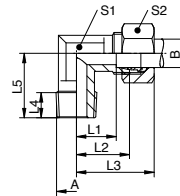




Winkel-Einschraubverschraubungen

Elbow male stud couplings

WE-LR-KEG



Winkel-Einschraubverschraubung, Einschraubgewinde BSPT, leichte Reihe

Elbow male stud coupling, male thread BSPT, light duty series

Verschraubungsstutzen

Body only

Reihe	A	B	PN / bar	L1 / mm	L2 / mm	L3 / mm	L4 / mm	L5 / mm	S1	S2	Art.Nr.
L	R1/8keg	06	315	12.0	19.0	29.0	8.0	20.0	12	14	WE06LK01
L	R1/4keg	06	315	14.0	21.0	31.0	12.0	26.0	12	14	WE06LK02
L	R3/8keg	06	315	17.5	25.0	35.0	12.0	28.0	17	14	WE06LK03
L	R1/8keg	08	315	14.0	21.0	31.0	8.0	26.0	12	17	WE08LK01
L	R1/4keg	08	315	14.0	21.0	31.0	12.0	26.0	12	17	WE08LK02
L	R3/8keg	08	315	17.0	24.0	34.0	12.0	28.0	17	17	WE08LK03
L	R1/2keg	08	315	20.0	27.0	37.0	14.0	32.0	17	17	WE08LK04
L	R1/8keg	10	315	18.0	25.0	35.0	8.0	21.0	14	19	WE10LK01
L	R1/4keg	10	315	15.0	22.0	33.0	12.0	27.0	14	19	WE10LK02
L	R3/8keg	10	315	17.0	24.0	35.0	12.0	28.0	17	19	WE10LK03
L	R1/2keg	10	315	21.0	28.0	39.0	14.0	32.0	17	19	WE10LK04
L	R1/8keg	12	315	17.0	24.0	35.0	8.0	28.0	17	22	WE12LK01
L	R1/4keg	12	315	17.0	24.0	35.0	12.0	28.0	17	22	WE12LK02
L	R3/8keg	12	315	17.0	24.0	35.0	12.0	28.0	17	22	WE12LK03
L	R1/2keg	12	315	21.0	28.0	39.0	14.0	34.0	17	22	WE12LK04
L	R1/4keg	15	315	21.0	28.0	39.0	12.0	30.0	19	27	WE15LK02
L	R3/8keg	15	315	21.0	28.0	39.0	12.0	34.0	19	27	WE15LK03
L	R1/2keg	15	315	21.0	28.0	39.0	14.0	34.0	19	27	WE15LK04
L	R3/8keg	18	315	22.5	30.0	42.0	12.0	35.0	24	32	WE18LK03
L	R1/2keg	18	315	23.5	31.0	43.0	14.0	36.0	24	32	WE18LK04
L	R3/4keg	18	315	23.5	31.0	43.0	16.0	37.0	27	32	WE18LK06
L	R1keg	22	160	28.5	36.0	48.0	18.0	46.0	36	36	WE22LK08
L	R3/4keg	28	160	30.5	38.0	52.0	16.0	48.0	36	41	WE28LK06
L	R1keg	28	160	30.5	38.0	52.0	18.0	48.0	36	41	WE28LK08

Art.Nr.
XWE06LK01
XWE06LK02
XWE06LK03
XWE08LK01
XWE08LK02
XWE08LK03
XWE08LK04
XWE10LK01
XWE10LK02
XWE10LK03
XWE10LK04
XWE12LK01
XWE12LK02
XWE12LK03
XWE12LK04
XWE15LK02
XWE15LK03
XWE15LK04
XWE18LK03
XWE18LK04
XWE18LK06
XWE22LK08
XWE28LK06
XWE28LK08

WE-SR-KEG

Winkel-Einschraubverschraubung, Einschraubgewinde BSPT, schwere Reihe

Elbow male stud coupling, male thread BSPT, heavy duty series

Verschraubungsstutzen

Body only

Reihe	A	B	PN / bar	L1 / mm	L2 / mm	L3 / mm	L4 / mm	L5 / mm	S1	S2	Art.Nr.
S	R1/4keg	06	630	16.0	23.0	33.0	12.0	26.0	12	17	WE06SK02
S	R3/8keg	06	630	18.0	25.0	35.0	12.0	28.0	17	17	WE06SK03
S	R1/2keg	06	630	23.0	30.0	40.0	14.0	32.0	17	17	WE06SK04
S	R1/8keg	08	630	17.0	24.0	34.0	8.0	27.0	14	19	WE08SK01
S	R1/4keg	08	630	17.0	24.0	34.0	12.0	27.0	14	19	WE08SK02
S	R3/8keg	08	630	18.0	25.0	35.0	12.0	28.0	17	19	WE08SK03
S	R1/2keg	08	630	23.0	30.0	40.0	14.0	34.0	17	19	WE08SK04
S	R1/4keg	10	630	17.5	25.0	37.0	12.0	28.0	17	22	WE10SK02
S	R3/8keg	10	630	17.5	25.0	37.0	12.0	28.0	17	22	WE10SK03
S	R1/2keg	10	630	22.5	30.0	42.0	14.0	32.0	17	22	WE10SK04
S	R1/4keg	12	630	21.5	29.0	41.0	12.0	29.0	17	24	WE12SK02
S	R3/8keg	12	630	21.5	29.0	41.0	12.0	28.0	17	24	WE12SK03
S	R1/2keg	12	630	22.5	30.0	42.0	14.0	32.0	17	24	WE12SK04
S	R1/2keg	14	630	22.0	30.0	42.0	14.0	32.0	19	27	WE14SK04
S	R3/8keg	16	400	23.5	32.0	45.0	12.0	32.0	24	30	WE16SK03
S	R1/2keg	16	400	24.5	33.0	46.0	14.0	32.0	24	30	WE16SK04
S	R1/2keg	20	400	26.5	37.0	52.0	14.0	37.0	27	36	WE20SK04
S	R3/4keg	20	400	25.5	36.0	51.0	16.0	42.0	27	36	WE20SK06
S	R3/4keg	25	400	30.0	42.0	58.0	16.0	46.0	36	46	WE25SK06

Art.Nr.
XWE06SK02
XWE06SK03
XWE06SK04
XWE08SK01
XWE08SK02
XWE08SK03
XWE08SK04
XWE10SK02
XWE10SK03
XWE10SK04
XWE12SK02
XWE12SK03
XWE12SK04
XWE14SK04
XWE16SK03
XWE16SK04
XWE20SK04
XWE20SK06
XWE25SK06